

Major activities

Women-related Facility Management and IT Support

SFWF manages a women-related facility through an online system building on women's facilities and women's information.

- ① One-stop information system building
- ② Women's information online system building
- ③ Management of Seoul Women's Resource Development Institute
- ④ Management of Seoul Healthy Family Support Center

Promotion of Women-and-Family-friendly Culture, Art, and Space

SFWF supports women-family-friendly culture and art projects which help women and families cultivate cultural sensibility.

- ① Women artists discovery series
- ② Culture and art program for families
- ③ Exhibition on Women's story
- ④ Culture program for citizen's nostalgia
- ⑤ Management of 'Funny Playground'
- ⑥ Management of 'Books Gallery'

Improving Customer Satisfaction and Management Efficiency

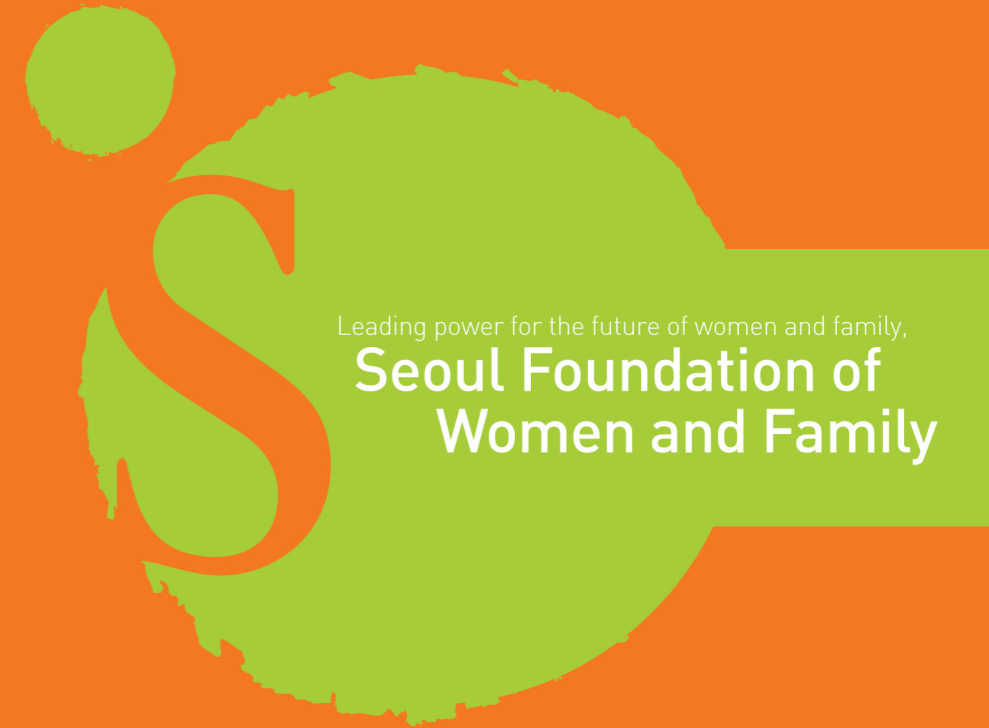
SFWF upgrades Seoul citizens' level of happiness through customer satisfaction management.

- ① Seoul women's plaza- facility management
- ② Customer satisfaction management
- ③ Promotion of SFWF
- ④ Upgrading Seoul citizens' level of happiness through creative management



Seoul Women's Plaza

As a women- and family-friendly space, the Seoul Women's Plaza is an 8 story building (5 levels above and 3 levels below ground). There is an International Conference Hall that seats 600, Art Hall 'BOM' that seats 300, and various smaller lecture rooms, seminar rooms that are available to rent. There are also Women NGO Centers and several club activity rooms. The Plaza can accommodate 170 overnight guests in its Korean-style and Western-style rooms. Additionally, the Plaza is equipped with a Books Gallery, playroom for children, History of Women's Exhibition Hall, and sports center.



서울특별시
여성가족재단
 Seoul Foundation of Women & Family

345-1 Daebang-dong, Dongjak-gu, Seoul 156-808
 Tel: 82-2-810-5000 Fax: 82-2-810-5100
 www.seoulwomen.or.kr

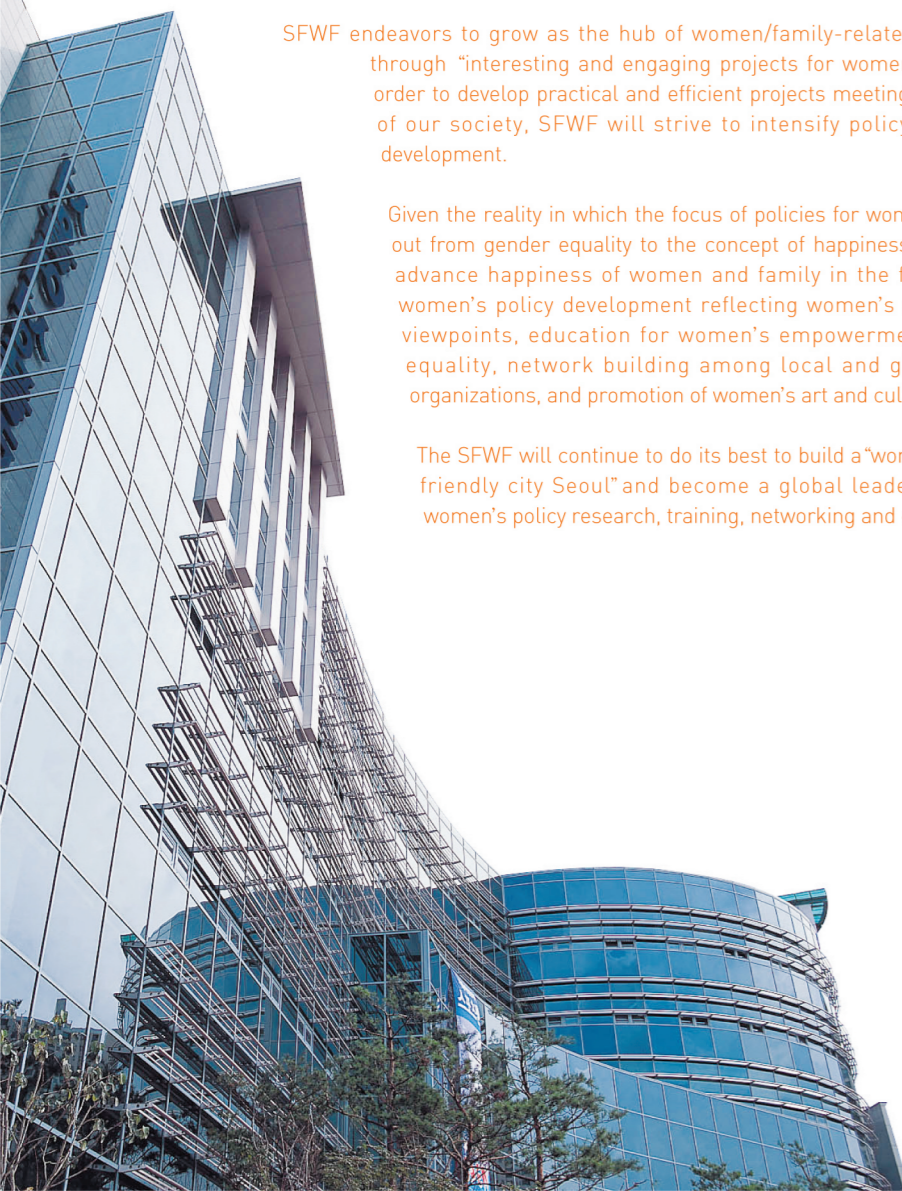
Introduction

Since its establishment in 2002, SFWF has been committed to achieve its mission to promote women's participation in society and a culture of gender-equality. Recognizing the formations and functions of family have recently diversified, thereby increasing the need for more realistic policies, SFWF has extended its areas of projects to women, family, childcare, low birth rate and juveniles.

SFWF endeavors to grow as the hub of women/family-related organizations through "interesting and engaging projects for women and family." In order to develop practical and efficient projects meeting the core needs of our society, SFWF will strive to intensify policy research and development.

Given the reality in which the focus of policies for women is branching out from gender equality to the concept of happiness, SFWF aims to advance happiness of women and family in the following ways: women's policy development reflecting women's experience and viewpoints, education for women's empowerment and gender equality, network building among local and global women's organizations, and promotion of women's art and culture.

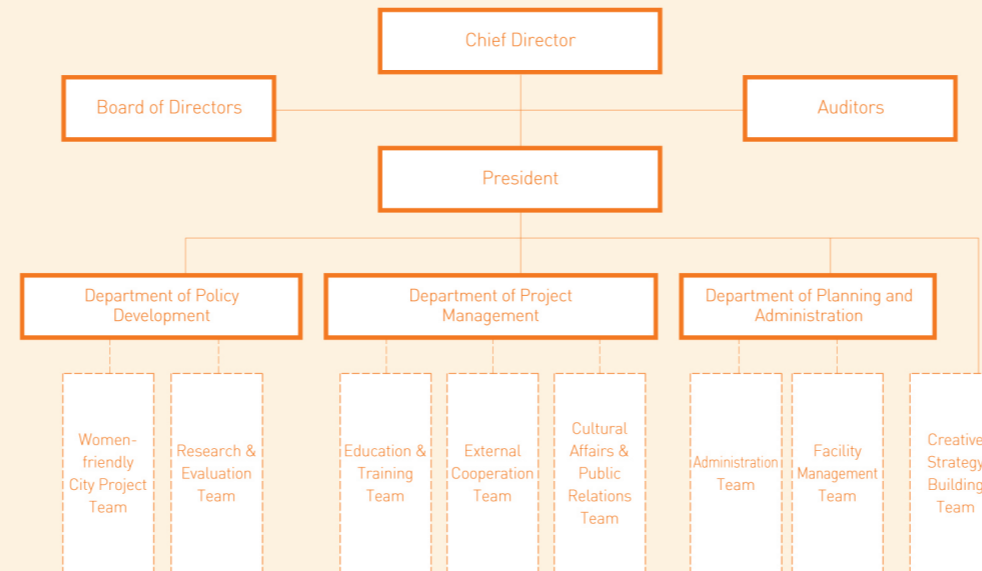
The SFWF will continue to do its best to build a "women-and-family-friendly city Seoul" and become a global leader in advancing women's policy research, training, networking and culture.



Vision and mission



Organization chart



Major activities

Research & Development of Women's Policies to improve the quality of lives for women and families

SFWF develops policies and programs for women and family through R&D of women and family policies for women's empowerment and gender equality.

- ① Seoul Gender Based Analysis 2008
- ② Study on Gender Sensitive Indicator (GSI) development and application
- ③ Research on the condition of multicultural families and support system building
- ④ Development of Women Friendly City Project (WFCP)
- ⑤ Study on the management improvement of orphanage welfare facilities
- ⑥ Framework development of gender-segregated statistics on the Seoul metropolitan government administration
- ⑦ Evaluation tool development for the 25 autonomous districts' women's policies
- ⑧ Study on the low-birth rate and policy improvement in Seoul
- ⑨ Evaluation on the 25 autonomous districts' women's policies
- ⑩ Evaluation on the Seoul Women's Development Centers
- ⑪ Evaluation on the Women Recourses Development Center

Gender-sensitivity enhancement and women's empowerment

SFWF disseminates the understanding and knowledge of gender equality through gender sensitive training for various levels. SFWF also supports women leaders' growth and development through women's leadership development training which is able to strengthen women's capacity and increase their competitiveness.

- ① Gender sensitivity advancement training for public officials
- ② Capacity building training for the autonomous resident committee members and public officials
- ③ Support program for women in bridal migration and the related families
- ④ Women's leadership development course
- ⑤ Customized training for regional women leaders
- ⑥ Support program for NGO women activists

Women's local and global networking building

SFWF is enlarging its women's network through exchange programs and MOUs with various women related organizations as well disseminating bounds of women's policies and women's cooperation to the global society.

- ① Exchange programs of women related organizations
- ② Equal & healthy family support project
- ③ Women's NGO collaboration project
- ④ Global promotion of the Women Friendly City Project
- ⑤ Metropolitan city women's network coordination
- ⑥ Facility support program for women

