



Seoul Foundation of

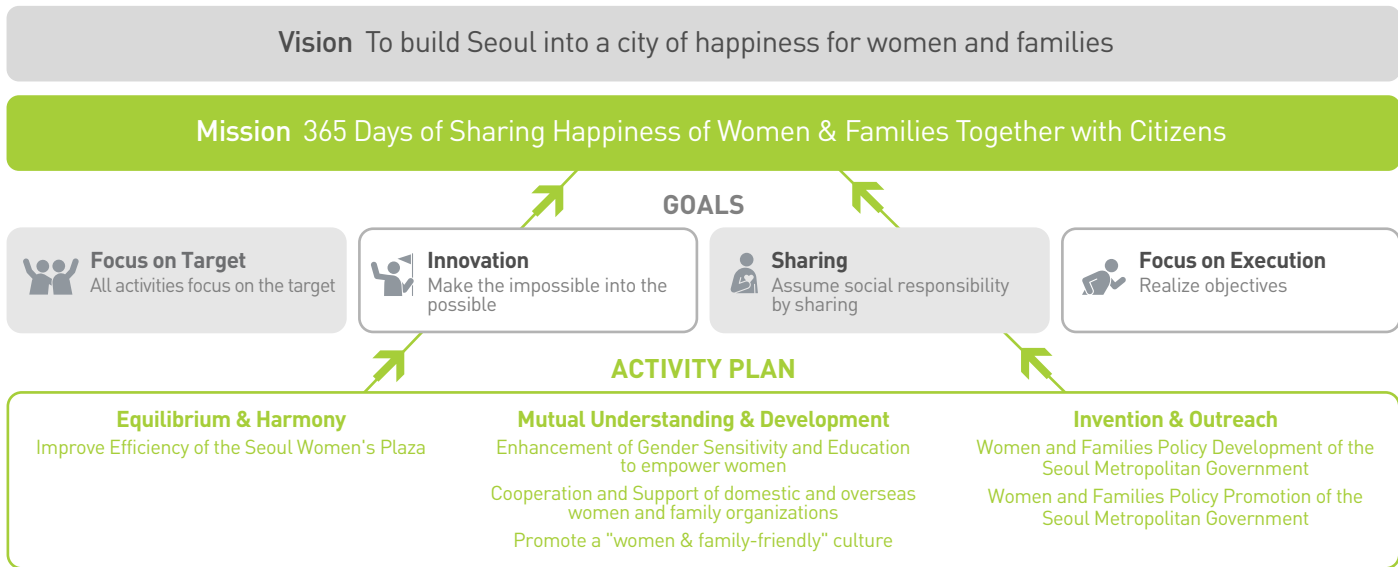
A leading power for the future of women and family, the Seoul Foundation of Women and Family

Women and Family



To build

Seoul into a city of happiness for women and families





Seoul, Going beyond gender equality to realize the happiness of citizens

The scope of policy development and promotion of SFWF has expanded from gender equality to the enjoyment of happiness by citizens. SFWF is increasing the happiness of Seoul's citizens by researching and proposing practical policies for women and families to ensure that women's experiences and views are reflected to improve the quality of life for everyone.



Major Activities Seoul Foundation of Women and Family

We aim to create a society where the human rights of men and women are equally respected and the skills of men and women are equally manifested by organizing various educational programs. We plan to do so by improving the gender sensitivity of public officials and strengthening their competencies in executing gender-sensitive policies including the Women-Friendly Seoul project and by providing education to improve the leadership skills of society's female leaders.

Independently! Together!

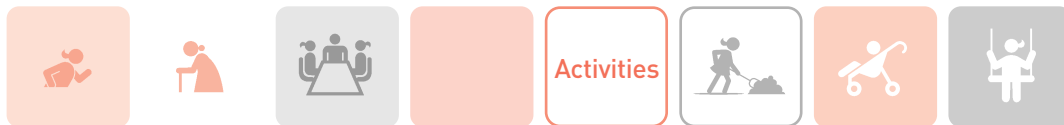
The Development of Seoul



Providing new hope

to women and families in Seoul

SFWF is creating a Seoul of mutual care irrespective of sex, age, ideology, and nationality. It is guiding an equal and women-and-family-friendly environment in society while women-led activities in local communities enrich our society. SFWF wants to share the Seoul Women-Friendly City Project with citizens, which reflects the characteristics of both women and men.



Major Activities Seoul Foundation of Women and Family

SFWF is strengthening and building domestic and overseas women networks and promoting the activities of women and family organizations and groups. By providing various venues for activities, SFWF is supporting women's organizations and communities and is creating an online network of women-related facilities. The international women's network is laying the foundation for the development and reputation of a "Women-Friendly" Seoul that extends beyond Asia to the rest of the world.

Seoul,
realization of equality
through promotion and outreach



The Seoul Women's Plaza consists of 8 floors including 3 basement floors and is the largest area of social activities for women and families. With a 450 seat capacity International conference hall, the 292 seat capacity Art hall BOM, specialized conference rooms, mid-to-small sized lecture and seminar rooms, the Women's NGO center, and club activity rooms which can be utilized for various events, the Seoul Women's Plaza also offers both Korean-style and Western-style accommodations for up to 170 guests. With a women's information resource room, a children's playroom, a history of women exhibition hall, and the Art hall BOM, the Seoul Women's Plaza encourages participation in women-friendly societal and cultural activities as well as networking between domestic and overseas women, and invites you to this area of diversity.



A unique

women-and-family-friendly cultural complex,
the Seoul Women's Plaza

Facility Information Seoul Foundation of Women and Family



Floor Guide

5th Floor

Seminar room | Offices | Outdoor garden(14) | Accommodations etc.

4th Floor

Audio-visual room | Accommodations(16) | Art College(5) | IT education hall

3rd Floor

Restaurant Green Terrace | Children's Playroom | Women's NGO center
Accommodations(6)

2nd Floor

History of Women Exhibition Hall | Club activity rooms
Seminar rooms Conference rooms | Women's Information Resource room

1st Floor

International conference hall (450 seats) | Art Hall BOM (292 seats)
Sports center

1st-2nd basement

Swimming pool (6 lanes) | Parking lot | Art hall ancillary facilities